



**Big Horn Corporation**  
Quality Tools & Accessories

# 2015 CATALOG



19651 Shelf Pin Jig & Bit



14105 Offset Router Base



14355 Magneto Tape Holder



Made in USA.  
19079 Miter Aid



19674 17 Pc Miter Clamp Set



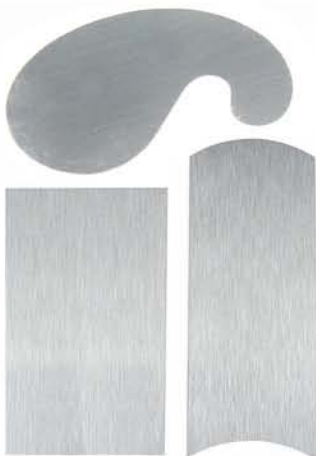
Made in USA.  
19671 Miter Clip



20306 6 inch Traditional Cabinet Screwdrivers



20157 Plated Mortise Gauge



20188 Cabinet Scraper set



24800 Mini Revolution Hollowing System



24162 Pepper Mill Tool



# INDEX

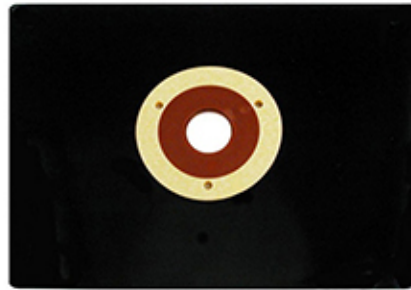
Ball Bearing Rollers	20
Bevels	30
Blast Gates	10
Calipers	12
Carving Sets & Tools	28, 29
Center Finder	11
Chisels & Chisel Sets	24
Clamps & Accessories	3, 19
Countersinks & Sets	14, 15, 16
Drilling & Cutting Tools	11, 14, 16
Dust & Filter Bags	7, 8
Dust Collection - Adapters	8, 9
Dust Collection - Fittings	6, 8, 9
Dust Collection - Hangers	7
Dust Collection Accessories	7, 8, 9, 10
Engineer Squares	10, 12
Featherboards & Kits	2
File & Burr Sets	16, 20
Glue Related	18
Hammers & Mallets	21, 22, 29
Hinge Bits	14
Hoods - Dust	8, 9
Hose - Dust	6
Jigs	3, 4, 5, 11, 14
Knobs & Handles	22
Magnetic Switches	5
Mallets	22, 29
Marking & Measuring	10, 11, 12, 30, 31
Marking Knives	12, 30
Miter Clamps & Accessories	19
Pen Turning Tools	13, 28
Planes, Miniature	31
Plug Cutters	15
Pocket Hole Tools & Bits	14
Polish & Oil	20
Power Tool Accessories	1, 2, 3, 4, 5
Pro-Grip Clamps, Access, Kits	23
Push Blocks, Sticks, Kits	2
Rollers: J & Press	17
Rosette Cutting	13

Router Accessories	1, 2
Sanding Products & Access.	5, 16, 17
Saws	31
Scrapers & Accessories	29, 30
Sharpening Tools	5, 21, 22, 30
Shop Accessories	4, 17, 19, 20, 21, 29, 30
Table Saw Accessories	2, 3, 4
Table Saw Inserts	4
Tape, UHMW	3
Taper Drills & Sets	15, 16
Toggle Clamps	4
Trimmers	21
Try Squares	12, 30, 31
T-Track & Kits	4
Turning Tools - Crown	25, 26, 27, 28

# Power Tool Accessories

## Router Table Insert

9"x12"x3/8" router table insert to accommodate heavy duty routers. Snap out rings of 3 7/8", 2 5/8" & 1 1/4" for small cutters & Porter Cable template guides. Shoulder pin for freehand work.  
**18100 Router Table Insert**



## Brass Router Gauge



Easily set router bit to desired depth of cut.  
**19080 Brass Router Gauge**

## 8 piece Brass Router Bushing Set

This brass template set will fit Porter Cable and other routers that will accept a 2 piece template guide bushing. Set comes in a plastic case and includes 7 assorted bushings and 2 lock nuts.

**19604 8pc Brass Router Bushing Set**



## Router Buddy Kit



The Router Buddy fits or adapts to fit almost all routers, and converts your router into a multi-purpose system for the cost of one good accessory. Setups are completed in about 30 seconds. User friendly, extremely light and compact  
**14100 Router Buddy**

## Router Pad



Large 24"x48" non-slip pad allowing work without the limitation of clamps or vises. Ideal for woodworking with the router, chisel tool, belt or pad sander. Use anywhere a non-slip surface is desired. Can be trimmed to any size with scissors. Washable and mildew resistant

**19116 24"x48" Non-Slip Router Pad**

## Offset Router Base



Provides maximum support for routers and laminate trimmers. Made from 3/8" clear acrylic this base has snap out Porter Cable style template guide. Made in USA.

**14105 Offset Router Base**

## Router Bit Vault



Store and protect up to 39 valuable router bits in this sturdy molded case with pre cut foam inserts. Integrated recessed handle and heavy duty latches make it ideal for storage as well as taking to job sites. Measures 17" wide, 14" tall, and 4-1/2" deep.

**14115 Router Bit Vault**



## Router Bit Centering Gauge

Fits both 1/2" and 3/4" router shanks. 3" long by 1/2".

**19081 Router Bit Centering Gauge**

## Lewin Router Compass



Attaches to almost any router. Cuts circles from 8" to 48" in diameter. Made from heavy duty acrylic. Made in USA.  
**26100 Router Compass**

## Lewin Compass Extension



Add this extension to the Lewin Router Compass for an additional 12" allowing the cutting of circles up to six feet in diameter. Made in USA.  
**26101 Router Compass Extension**



# Power Tool Accessories

## Dust Router



Finally! A dust collector for your router table that gets nearly all the sawdust from top and underneath whether doing edge or dado cuts! It has a unique silicon dust cup which fits inside the router cavity that evacuates dust out thru a vacuum connection, while also connecting to the dust port on your fence. Easy install and never needs to be removed to change tools! Will fit any router and any router table and hooks up to shop vacuums and dust collection systems.

**11772 Dust Router**

*This great product was showcased at the 2010 IWF and was received with much interest. See for yourself why Ronald Johnson, at WoodWorking.com, reviewed it with such enthusiasm!*

## Router

Turn the dial and adjust the speed of your router bit. The variable speed dial allows for full horsepower and torque at all speeds from 0 to full RPM. Use with routers, sanders, grinders, drills & other universal brush type motors **15 amps or less.**

**18852 Router Speed Control**



***Not for use with slow starting motors or devices with internal speed controls***

## Deluxe Featherboard



Our original featherboard keeps stock up against the fence on table saws, shapers, router tables, etc. Fits in standard miter slot.

**Made in USA.**

**10215PB Deluxe Featherboard in Polybag**

**10215C Deluxe Featherboard carded**



## T-Track Featherboard

New molded adapters attaches to your T-track miter slot for extra solid grip when holding stock on table saws, shapers, router tables, etc. **Made in USA.**

**10216 T-Track Featherboard**

## Wood Featherboard

Made of wood and metal. Keeps stock against fence. Fits standard miter slots.

**19134 Wood Featherboard**



## Hold Down Featherboard

Designed for fence mounted applications, this low profile feather board restricts vertical material movement during cutting operations. Includes mounting hardware

**19132 Hold Down Featherboard**



## Straight Handle Push Block

A favorite from the past, with a thumb rest built into the handle.

**19073 Straight Handle Push Block**



## Push Block

Excellent safety item for holding and pushing stock. Special rubber sole grips wood firmly. Great for joiner, router table or table saw.

**19072 Push Block**



## V-Push Sticks



V groove and notch at end help control hard to hold down pieces.

**Set of 2**

**10223 V-Push Sticks**

## Push Stick



For controlling stock when space is limited. Keeps hands out of the way for maximum safety. Excellent when ripping with the table saw. New Design Push Stick has hanging hole and thumb rest.

**Made in USA.**

**10221PB Push Stick in Polybag**

**10221C Push Stick Carded**

## Power Hands Push Stick

Interchangeable v-groove and flat soles with spring loaded pin at the rear make this oversized push stick a great accessory for shapers, joiners, router tables and table saws. Rubber pads help absorb vibrations and provide powerful grip.

Made in USA

**10230 Power Hands Push Stick**



## 3 Piece Starter Kit



Includes one of each of 10215, 10221 and 19072

**10225 Starter Kit**



# Power Tool Accessories

## Fence Clamps



These Fence Clamps make using a sacrificial fence or stop block so easy you will wonder where they have been all your life. Simply drill a 7/16" hole in anything you want to clamp to your saw's fence and you are ready to go.

**Sold in pairs.**

**19851 1-1/2" - 3"**

**19852 3" - 4-1/2"**

## Gauge-It



Quickly and accurately measures the precise angle and height of your table saw blade, even as you adjust it! Reads blade heights up to 2 1/2" by 64th's, and angles to 45° by 1. Placed on its side, the **Gauge-It** also measures miter fences for true compound cuts. Made in USA of durable ABS plastic.

**13085 Gauge-It—right tilt**

**13086 Gauge-It—left tilt**

## Tilt Box The original from Beall Tool Co.



Produce precise angle readings on table saws, jointers and other shop equipment. The Tilt Box is a digital inclinometer that will read relative angles to an accuracy of +/- .1.

**14220 Tilt Box**

## Saw Mate



11-in-1 Table Saw Mate. Ideal for blade setup and ripping applications. Functions include: safety hold down push stick, table saw depth gauge, router depth gauge, center finder, angle gauge, 4" and 7" hook rule with 1/8" increments. (Replaces Part 19107 Saw Aid)

**Part 19105**

## UHMW Self-Adhesive Tape



Self-lubricating tape easily applies to fences, jigs, any machine surface.

**Made in USA**

**19420 3/4" x 6'**

**19425 2" x 6'**

**19430 3" x 6'**

## Band Saw Tension Crank



← Before After →

Painless inexpensive conversion for most 14" band saw tension screws to a faster, more easily adjusted crank handle. Includes 13" long screw, crank handle and instructions.

**14330 Band Saw Tension Crank**



## Taper Jig

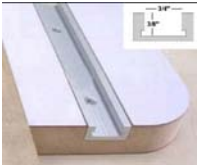


This professional quality taper jig will out perform and out last other taper jigs. The jig has a metal hinge that will not break and "T-Slotted" sides for adjustable work stop. Make accurate taper cuts on any table saw or radial arm saw. 24" long with graduated scale to measure up to 3" per foot or 15 degrees of taper. Reversible for left or right hand operation.

**19066 Taper Jig**

# Power Tool Accessories

## Standard T-Track



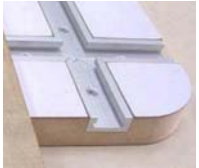
Ideal way to add t-track to a home built band saw, drill press, or router table. Makes attaching custom jigs, featherboards and hold down clamps a snap!

**19800 32" Aluminum T-Track**

**19801 36" Aluminum T-Track**

**19802 48" Aluminum T-Track**

## T-Track Intersection Kit



For use with our standard T-track, this 4-piece kit allows you to make the T-track intersection you need. Mounting screws included.

**19803 T-Track Intersection Kit**



## Universal Jig Making Kit

Kit contains eight knobs, eight screws, four universal track adapters and four T-Track adapters. A must have item for anyone building homemade jigs.

**13016 Universal Jig Making Kit**

## Miter Track Mount Kit

Locking jigs, fixtures and feather boards in position on the top of table saws, shapers and router tables is easy with this set. With the twist of a knob, the tapered bolt spreads the locking bar inside the miter gauge slot giving you a secure attachment point anywhere along its length. This set is made for 3/4" wide miter slot and will fasten up to 3/4" thick jig material or feather board. Over all length is 2-1/2"



**19805 Miter Track Mount**

## Small T-Track (3/4" by 1/2" OD)

**Made in USA**



Ideal way to add t-track to a home built band saw, drill press, or router table. (Bolt not included) Can be used with hex bolt mounted featherboard #19132.

**19814 24" Small Aluminum T-Track**

**19816 36" Small Aluminum T-Track**

**19818 48" Small Aluminum T-Track**

**See T-Bolts on page 22**

## Fast Pad Set



Using wrenches to adjust toggle clamp pads is a headache. Here's the solution. By loosening the wing nut on this pad, it's free to slide in the clamp's U-channel and adjust vertically by spinning the knurled brass knob. It replaces the spindle in any horizontal or vertical Fixture Clamp that accepts 5/16" shaft. **2 per package.**

**19849 Fast Pad Set**

## Table Saw Inserts

Eliminate spaces between blade and saw insert where little pieces fall and no work support is provided. A must for working with veneers and melamine. Also excellent for use with dado blades. All inserts have fitting nubs, leveling screws with Allen key, and rear stabilizing pin. **Made in USA**

### DELUXE INSERTS:

Inserts are 1/2" thick High Density PVC, and weigh approx. 18 oz. and are machined for flatness prior to cutting. Our deluxe inserts will withstand temperatures to 0° without shattering or curling.

**Deluxe Inserts pictured below - Standard inserts are white**



**18416 Deluxe 18413 Standard**  
Fits Delta & other saws with a 3 3/4"x13 3/8" opening including Powermatic #63, Grizzly & other imports.



**18418 Deluxe 18414 Standard**  
Fits Craftsman 10" belt drive saws with a 3 3/4"x14" opening (most models 113.29800 to 113.90650).



**18426 Deluxe 18410 Standard**  
For Jet left tilt blade saws (JTAS-10XL) Measures 3 11/16 x 13 1/4"



**18424 Deluxe BLANK**  
4 1/4"x14 3/4", includes 4 set screws, Allen key & stabilizing pin.

## Miter Track Hold Down Kit



Shop fixtures often need a way to clamp project material to them. This clamp has a 1-1/2" capacity and soft PVC contact surfaces. Includes 5 point knob, T-bolt, washer, hold down and large T-Track Mount. (Miter T-Track not included.)

**19807 Hold Down Kit**

### Straight Line Toggle Clamp

**Holding Capacity 300 lbs**



**19841 Straight Line Toggle Clamp**

### Low Silhouette Toggle Clamp

**Holding Capacity 500 lbs**



**19843 Low Silhouette Toggle Clamp**

### Low Silhouette Toggle Clamp

**Holding Capacity 200 lbs**



**19845 Low Silhouette Toggle Clamp**

### Vertical Toggle Clamp

**Holding Capacity 500 lbs**



**19842 Vertical Toggle Clamp**

### Vertical Toggle Clamp

**Holding Capacity 200 lbs**



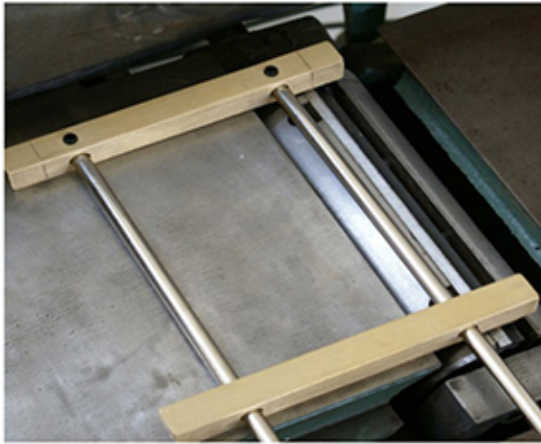
**19844 Vertical Toggle Clamp**

Designed with an over center locking action, these clamps make quick work of holding things in place. Once set to the proper thickness, holding and releasing material for repetitive production jobs is a snap!



# Power Tool Accessories

## Jointer Knife Setting Jig



Solid brass bars with high strength magnets hold your blades in place while you precisely set jointer knives to prevent end snipe on your work pieces. The bars are held in position with polished steel rods that make this one of the nicest knife setting jigs available.

**Part 19614 Jointer Knife Setting Jig**



## Planer Knife Setting Jig

Set planer knives quickly and accurately with these magnetized setting jigs. The jig holds knives tightly in position while both hands are free to adjust the gibbs and cutterhead. Keeps knives in perfect alignment while setting and fits planer knives from 12" to 26". Pair comes in wood box.

**19612 Planer Knife Setting Jig**

## Knife Hone & Holder



Excellent for sharpening and honing both bevel and face sides of jointer and planer blades without having to remove them from the machine. Comes with 180 and 400 grit reversible stones.

**19046 Knife Hone**

**19544 Abrasive Belt Cleaner**

**Abrasive Belt Cleaner  
1.5"x1.5"x8" Stick**

**19547 Abrasive Belt**

**Abrasive Belt Cleaner  
2"x2"x12" Stick**

**19549 Abrasive Belt Cleaner**

**Abrasive Belt Cleaner  
3"x3"x12" Stick**



## RS-1 Laser Saw Guide



Accuracy at the speed of light.... The RS-1 projects its beam where the blade will cut. Will fit most mitersaws, and Cutoff Saws with 7/16" shaft.

Dimensions (O x H): 2.96" x 5.41"

Weight: 2.12 oz. including Batteries

Switch type: Centrifugal switch

Power: 3xLR44 batteries - Wavelength: 650nm

Warranty for 1 year

Max operating speed: 5000RPM

Complies with the European Standard EN 60825-1 & USA FDA

Laser safety regulations

**14205 Laser Saw Guide**

**DISCONTINUED**

## Magnetic Switches

Save BIG on replacement magnetic switches for your repair facility needs. UL & CSA listed products from well known OEM manufacturer.



**18823 1ph 220-240v 3hp 18-26amp**

**18825 1ph 220-240v 5hp 22-34amp**

**18833 3ph 220-240v 3hp 8-12amp**

**18835 3ph 220-240v 5hp 12-18amp**

**18837 3ph 220-240v 7.5hp 18-26amp**

**18839 3ph 220-240v 10hp 22-34amp**



# Dust Collection

## Clear PVC Flex Hose

Made of clear PVC, with a helix of heavy gauge wire, this quality hose is ideally suited for connecting machines to your dust collection system. This very flexible hose will make a 90 degree turn with only a 6" radius, and unlike hoses made completely of plastic, the wire cord supporting this hose can be grounded to the machine for dissipation of static charges. Shipping and handling is a snap: a 10 foot section will compress to less than 36 inches in length and **boxed 20' hose does not incur oversize shipping charges.**

*Please note: When fully extended this Clear PVC Flex Hose measures as sold, but relaxed length will vary depending on your application.*

2.5" Clear Flex Hose



4" Clear Flex Hose



- |            |                                   |
|------------|-----------------------------------|
| 11294B (6) | 2.5" X 20' Clear Flex, Polybagged |
| 11294      | 2.5" x 20' Clear Flex, Boxed      |
| 11295B (6) | 2.5" x 10' Clear Flex, Polybagged |
| 11295      | 2.5" x 10' Clear Flex, Boxed      |
| 11494B (6) | 4" x 20' Clear Flex, Polybagged   |
| 11494      | 4" x 20' Clear Flex, Boxed        |
| 11495B (8) | 4" x 10' Clear Flex, Polybagged   |
| 11495      | 4" x 10' Clear Flex, Boxed        |

## Adjust-A-Flex Hose



Now your machines like band saws, scroll saws, drill presses, and sanders can have a dust port temporarily aimed right where the dust is created. Its ability to twist, bend, expand, or contract, and then hold this shape, makes it ideal for situations where conventional hose can not be used.

Made from durable polypropylene plastic in standard 2-1/2" or 4" diameter. When compressed this hose measures only about 12", yet it stretches to more than 3 feet when fully extended.

Use Big Horn Part #11133 with 2-1/2" hose and #11402 with 4" hose to attach fittings.

**11298 Adjust-A-Flex Hose 2-1/2" x 39"**

**11498 Adjust-A-Flex Hose 4" x 39"**

## Hi-Tech Duravent Dust Collection Hose

**Made in USA**

This dust hose is made in the USA and is available in clear with a black helix. Interior of hose is smooth for better flow of debris. All dust hoses are individually boxed. **Oversized shipping charges apply to 4" x 20' dust hoses.**

Clear hose with black plastic helix.

- |       |                                   |
|-------|-----------------------------------|
| 11283 | 2" x 10' Clear with Black Helix   |
| 11293 | 2.5" x 10' Clear with Black Helix |
| 11292 | 2.5" x 20' Clear with Black Helix |
| 11393 | 3" x 10' Clear with Black Helix   |
| 11392 | 3" x 20' Clear with Black Helix   |
| 11493 | 4" x 10' Clear with Black Helix   |
| 11492 | 4" x 20' Clear with Black Helix   |



## Hi-Tech Duravent Vac-U-Flex Hose

**Made in USA**



Hi-Tech Duravent Super Vac-U-Flex is high strength. The fiber-reinforced PVC cover is bonded to coated spring steel wire helix. The smooth interior flexible hose is easy to handle and install. Industrial quality 2-ply reinforced PVC construction. Applications include dust collection, exhaust/ventilation, material handling. Operating temperature range: -20 to 150F. 10-foot length.

- 11183 1-1/4" x 10'**  
**11193 1-1/2" x 10'**

## Threaded Connectors



Use with Vac-U-Flex Hose

**11125 1-1/4"**

**11135 1-1/2"**

**Made in USA**



## 5 Gal Cyclone Dust Separator



Convert your single stage dust collector into a 2-stage unit with this lid and a common 5 gallon pail. Lets you collect the larger and heavier shavings and chips before they reach your impeller and dust collection bags. Uses 2-1/2" hose. **11142 5 Gallon Cyclone Dust Separator**

# Dust Collection

## Bridged Key Hose Clamps

Be aware these clamps need to match your hose.  
(Big Horn hose uses LEFT HAND spiral clamps)



**11752PK 5 Pack - 2 1/2" LH Clamp**  
**11752BX Box 50 - 2 1/2" LH Clamp**

**11712PK - 5 Pack 2 1/2" RH Clamp**  
**11712BX - Box 50 2 1/2" RH Clamp**



**11754PK 5 Pack - 4" LH Clamp**  
**11754BX Box 50 - 4" LH Clamp**



**11714PK 5 Pack - 4" RH Clamp**  
**11714BX Box 50 - 4" RH Clamp**

## Micron Filter Bags

99% efficient yet allows plenty of air flow for the motor. Washable.

**11761-15" 1 Micron Filter Bag**  
**11763-14" 1 Micron Filter Bag**  
**11765-20" 1 Micron Filter Bag**



**11775-14" Band Clamp**  
**11777-20" Band Clamp**



## Disposable Clear Plastic Dust Bags

**11778 5pk - Fits smaller 14" units**  
14" Diameter by 32" in high

**11781 5pk - Delta, Jet & other 20" units**  
20" Diameter by 43" high

**11785 5pk - Delta & other 16.5" units**  
16.5" Diameter by 47" high

**11789 5pk - Shop Fox & other 19.5" units**  
19.5" Diameter by 33" high



## Wire Hose Clamps

**11720PK 5 Pack 2" Hose Clamps**  
**11720BX Box 50 2" Hose Clamps**

**11725PK 5 Pack 2.5" Hose Clamps**  
**11725BX Box 50 2.5" Hose Clamps**

**11730PK 5 Pack 3" Hose Clamps**  
**11730BX Box 50 3" Hose Clamps**

**11740PK 5 Pack 4" Hose Clamps**  
**11740BX Box 50 4" Hose Clamps**



## Flat Hose Clamps

**11742PK 5 Pack 4" Hose Clamps-Flat**  
**11742BX Box 50 4" Hose Clamps-Flat**



## Key Hose Clamps

**11721PK 5 Pack 2" Key Hose Clamps**  
**11721BX Box 50 2" Key Hose Clamps**  
**11726PK 5 Pack 2.5" Key Hose Clamps**  
**11726BX Box 50 2.5" Key Hose Clamps**  
**11741PK 5 Pack 4" Key Hose Clamps**  
**11741BX Box 50 4" Key Hose Clamps**

## Plastic Hose Hangers



**11749PK 6 Pack 4" Hose Hangers**  
**11729PK 6 Pack 2 1/2" Hose Hangers**

## J Hooks (5 Packs)

Designed with the mounting holes at 90 degrees from each other, our J Hooks can be used to hang 4 inch dust collection hose from ceiling joists or along your wall.

**11748PK 5 Pack 4" J Hooks**



## Grounding Kit

Control static build-up in dust collection hoses and components. Kit contains 50' bare copper wire, 2 grounding screws, 2 ring terminals, 5 wire nuts, 3/32" drill & instructions.

**11750 Grounding Kit**  
Packaged in clam shell





# Dust Collection

## Dust Router



Finally! A dust collector for your router table that gets nearly all the sawdust from top and underneath whether you are doing edge or dado cuts! Never needs to be removed to change tools! Easy to install and it will fit any router and any table. Just hook it up to your dust collection systems.

**11772 Dust Router**



## Lathe Dust Hood

Clear lathe dust hood with hinged front comes with universal mounting brackets. Fits 4" hoses.

**11121 Lathe Dust Hood**

## Dust Cutter II Bag



The Dust Cutter II practically eliminates shop dust when connected to a shop vacuum or dust collection system. It can also be used in two other ways: "Collection Mode" with the zipper closed or in "Funnel Mode" with the zipper open dumping sawdust into a container. It is easily installed with the included Velcro tape on virtually any contractor's saw. Fits saw frames up to 20-1/2" by 24"

**11770 Saw-Dust Cutter Bag**

## Quick Adapters

**11415 4"x 4"**  
**11418 4"x 2 1/2"**  
**11515 5"x 4"**



## Hose Adapter

Hose adapter made of flexible rubber adapts hose to portable or stationary power tools.

OD fits 1", 1-1/4", 1-1/2", 2", 2-1/2"  
ID fits 5/8", 7/8", 1-1/8", 1 5/8", 2-1/4"

**11269 Hose Adapter**

## Tapered



**11253 2-1/2"x 1-1/4"**  
**11447 4" x 2-1/2"**  
**11448 4" x 2-1/4"**



**11449 4" x 1"**  
**Stepped Adapter**



## Universal Adapter

Adapt to any situation with this fitting by cutting it for the in and out diameters you need. Fits 6", 5", 4", 3", 2 1/2", 2", 1" od

**11600 Universal Adapter**



**11255 2 1/2"x 1 1/2"**  
**11318 3"x 2"**  
**11321 3"x 2 1/2"**  
**11427 4"x 2 1/2"**  
**11445 4"x 3"**  
**11500 5"x 4"**

## Big Gulp Dust Hood



Control airborne dust at the source! This large mouth dust hood is perfect behind miter saws, radial saws and sanding work tables. 13" x 16" opening with 4" outlet.

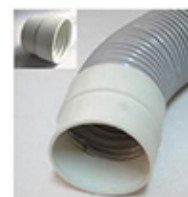
**11136 Big Gulp Dust Hood**

## Little Gulp Dust Hood



Dust control hood with 13 1/2" x 7 1/4" opening has 4" outlet.

**11124 4" Little Gulp Dust Hood**



## Threaded Hose Connectors

Rubber hose cuffs thread onto the outside of hose and stretch easily onto oversize fittings. The natural grip of rubber prevents it from slipping off the machine due to vibration.

**11125 1-1/4" Threaded Rubber Connector**  
**11135 1-1/2" Threaded Rubber Connector**  
**11425 4" Threaded Rubber Connector**



# Dust Collection



**11251 2-1/2" 45 Degree Elbow**  
**11410 4" 45 Degree Elbow**



**11252 2-1/2" 90 Degree Elbow**  
**11312 3" 90 Degree Elbow**  
**11412 4" 90 Degree Elbow**



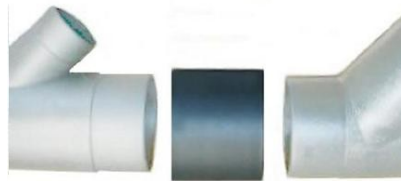
**11433 4 5/8" Flanged 4" Elbow**



**11309 3" Splice**  
**11409 4" Splice**



**11300 3" Tee Fitting**  
**11400 4" Tee Fitting**



**11261 2-1/2" Back Plastic Coupling**  
**11421 4" Black Plastic Coupling**



**11115 24" Floor Sweep 4" Port**



**11420 4" Plastic Cap**



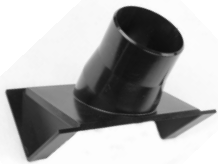
**11508 5" x 4" x 4" Y Adapter**  
**11603 6" X 4" X 4" Y Adapter**



**11403 4"x2 1/2" Y Fitting**



**11256 2 1/2" Y Fitting**  
**11306 3" Y Fitting**  
**11406 4" Y Fitting**



**11262 2 1/2" Triangular Dust Port**



**11250 2 1/2" Dust Port**  
**11428 4" Dust Port with 4 Mounting Holes**



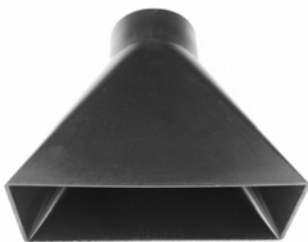
**11430 4" Universal Dust Port**



**11432 4" Round Dust Port**



**11426 4" PVC Pipe Adapter**



**11118 4" x 10" Dust Hood Fits 4" Hose**



**11401 Dust Hood Fits 4" Hose**



**11100 14"x14" Dust Hood Fits 4" Hose**



**11109 8" Joiner Hood Fits 4" Hose**



**11106 8-1/2" X 10-1/4" Dust Hood. Fits 4" Hose**

**11103 12"x12" Dust Hood Fits 4" Hose**

**11112 6" Joiner Hood Fits 4" Hose**

# Dust Collection

## Plastic Blast Gates

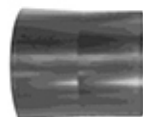


**11440 4" Threaded Plastic Blast Gate**

- 11259 2-1/2" Plastic Blast Gate**
- 11339 3" ~~Discontinued~~ Plastic Blast Gate**
- 11439 4" Plastic Blast Gate**
- 11442 4" Quick Coupling Blast Gate**



**11424 4" Quick Connect (Use with 11442)**



## Aluminum Blast Gates

- 11336 3" Aluminum Blast Gate**
- 11436 4" Aluminum Blast Gate**
- 11503 5" Aluminum Blast Gate**



## Universal Blast Gate Mount

Mount any blast gate, 2-1/2" to 6", to any solid surface. Includes screws.

**11435 Universal Blast Gate Mount**

# Marking & Measuring Tools



## Rotape™ Beam Compass **Made in USA**

This marking device combines a measuring tape and pencil scribe in one pocket size tool. It marks a radius from 3-1/2" to 6ft. It also can be used to mark straight and parallel lines, arcs, circles. Use on wood, steel, concrete, drywall, fabric, chalkboard, and more. Includes centering pin, collet and pencil lead. Replaces the standard beam compass and trammel point set.

**19641 Rotape Beam Compass**

## 24" Flexible Curve



A flexible measuring rule for capturing dimensions and curves around irregularly shaped objects. Measures 3/8"H x 1/4"W and 24"L, with clear, easy to read graduations on both sides (metric and imperial). One side has an inking edge and the other a pencil edge.

**19049 24" Flexible Curve**

## Large Protractor



Aluminum multi-purpose layout tool, has 20" by 9" arms with tightening screw. Built in protractor gives accurate measuring & transferring of all angles. Also very useful as a ruler & cutting guide.

**19071 Large Protractor**

## Timber Check Moisture Meter



The Timber Check meter is made from rugged ABS plastic, making this compact unit equally at home in your hand during use or stowed away in your tool box or pocket. Your Timber Check meter has circuitry designed with excellent temperature compensation and has been individually calibrated using fixed components. Also included with your new meter are four pages of literature consisting of operating instructions, a species adjustment table for 88 species of wood, as well as a short course on moisture in wood and its effects.

**3 yr manufacturer's warranty**  
**Made in Canada.**

**19921 Timber Check Moisture Meter**

## Pantograph

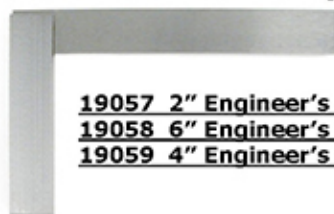


Enlarge or reduce drawings. Easily transfer designs right onto work piece. Made of aluminum, this 21" long pantograph has 26 ratios for all size drawings. Easily changed from enlargement to

reduction. Easy to follow instructions & pencil lead included.

**19069 Pantograph**

## Precision Steel Squares



- 19057 2" Engineer's Square**
- 19058 6" Engineer's Square**
- 19059 4" Engineer's Square**

## Magneto Tape Holder **Made in USA**



Magneto tape holders take the fuss out of clipping or pouching a tape measure to your belt with each use. Simply clip the Magneto tape holder to your belt and then press the tape against the magnetized holder. Presto! The tape is securely held in place, magnetically. Just push it down and away to reclaim the tape for the next use. Allows you to keep your eyes on the job. Recessed mounting helps prevent accidental removal.

Made from durable polycarbonate with powerful clip that fits even large belts. Makes a great gift for anyone on the go!

**14355 Magneto Tape Holder**

## Magneto Adapter with Adhesive

The Magneto adapter is nickel plated with 3M adhesive backing. Use for extra tape rulers and other objects. Great for small radios, music players and cell phones.

**14357 Extra Mounting Plate**





# Marking & Measuring Tools

## Center Finder Rulers



**Made in USA**

Accurately locate the exact center between any two points. Graduated in 1/32" on top and 1/16" on bottom of ruler.

**19110 12" Center Finder Ruler**  
**19109 24" Center Finder Ruler**

## Plastic Protractor



Measure any angle, bevel or slope. Long arm is 5 3/4" & the short is 3 1/4" long. Easy to read scale with brass knob to lock in any position.

**19070 Plastic Protractor**

## Drawer Slide Jig



This jig has been designed to make quick work of accurately installing overlay and insert drawer slides.

**19652 Drawer Slide Jig**



## Shelf Pin Jig

Easily and precisely space your next shelf pin holes 32mm apart, 37 mm or 64 mm from the edge of your work. Index the 20" jig with a shelf pin for use with any length stock.

One 1/4" self centering bit included.

**19651 Pin Jig & Bit**

**Optional Pin Jig Bits:**

**19138 1/4" Centering Bit**  
**19139 5mm Centering Bit**

## Center Finder



Easily locate the center of any round, square, hexagonal or octagonal stock up to 8" diameter.

**Made in USA**  
**19068 Center Finder**



## Set of 8 Angle Gauges

Set accurate, precise angles. Set contains 8 durable bright plastic preset angle gauges from 0 to 7.5°. Each angle gauge is 2 1/4" high & has 2 angle measurements, 1 on each side.

**Made in USA.**

**27130 8 Angle Gauges**



**Drawer Pull Marking Template**

## Drawer Pull Jig

Precisely mark position for drawer pulls. Mark center line, choose boring width needed and position wooden guide for correct spacing and lock. Align jig over center line & mark holes. Remove jig and drill. Jig measures 7" wide by 6" tall.

**19650 Drawer Pull Jig**

## Contour Gauge



Transfer and duplicate irregular shapes with precision. Available in 5" plastic.

**19064 5" Plastic Contour Gauge**



## Multi-Use Measuring Tool

Quickly measure height of saw cuts, router bits, depth of grooves, slots, dados, plus many more uses. Brass rule has metric graduations on one side and inches on the other. Assembled and packaged in USA from foreign and domestic parts.

**13080 Multi-Use Measuring Tool**



## Self-Stick Tapes

In 48" lengths, 9/16" width Left -to-Right or Right-to-Left to meet your shop needs.

**19645 Left to Right Self Stick Tape**  
**19646 Right to Left Self Stick Tape**

## Angle Divider



Quickly measure angles for duplication work. Threaded locknut for securing jig in place for later transfers as a template. Works on inside or outside angles.

**19050 Angle Divider**

## Miter Aid by Trim Clip



Trim Clip's Miter Aid tool is designed to make trimming and picture framing a one man job. It holds both the tape measure and trim securely. Allowing you to precisely mark your cut and make accurate 45-degree cuts the first time! Simply mark 1/4-inch reveal lines using the built in reveal ledge. Next measure the horizontal and vertical points. Make a left 45-degree cut. Transfer your measurement using Miter Aid. Make a right 45-degree cut. Hang the trim and you are done! Illustrated instructions on package back. **Made in USA.**

**19079 Miter Aid**



# Marking & Measuring Tools

## Dovetail Marker

Layout hand cut dovetails with ease. Marker is CNC machined from solid aluminum with a 1:5 template for soft woods, and a 1:8 template for hard woods. Unlike similar two piece products, this tool can never be assembled out of alignment.

**14350 Dovetail Marker**



## Drawer & Cabinet Templates

No more guesswork! Our templates let you simply "Mark and Mount." Simple, easy to follow instructions on package back. **Made in USA**



Use to accurately align your drawer knobs and pulls.

**14810 Drawer Template**



Use to accurately align your cabinet knobs and pulls.

**14820 Cabinet Template**

## Marking Knife

The tip of this quality marking knife from India is double beveled for both **Right and Left Hand scribing**. Overall length is 7" with a 1-1/2" blade and 5.5" wood handle.

**19061 Marking Knife**



## Angle Checker

Gives a quick reading of 8 standard angles from 15 to 70°. Made of solid brass with stamped angle degree markings & hole for hanging.

**19585 Angle Checker**



## Rout-A-Corner

Templates designed to route convex arcs, concave arcs & 45° angles. Made of durable polycarbonate resin. Transparent for easy viewing of the work surface. 6 piece set consists of 2 convex, 2 concave and 2 45° templates. Sizes are: convex templates: 1.5, 3, 4, 6"; concave templates: 1, 2, 3, 4"; and 45° templates: 1.5, 3, 4, 6".

**Made in USA**

**27000 Set 6 Rout-A-Corner Templates**

## Corner Templates

Easily draw accurate, repeatable corners. 4 color coded transparent plastic templates will do radii from 1/2" to 6" & chamfers from 1/2" to 2".

**Made in USA.**

**27125 Set 4 Corner Templates**



## Figure 8 Caliper

Transfer inside thickness from one end of caliper to the other. Opens to 12 inches.

**19055 Figure 8 Caliper**



## Inside Outside Caliper

Use to transfer measurement to the opposite end of the caliper for ease in measuring work.

**17085 Inside Outside Caliper**

## Square Set w/Center Finder

Our quality precision set from India includes 1 each 2", 4", and 6" squares, 2" center finder, scribe and 6" ruler.

Use set to quickly and accurately set up power tools and locate center of the face of round dowels and discs. Comes in wood storage box.

**19060 Square Set w/Center Finder**



**4" Outside Caliper  
Part 17042**

**6" Outside Caliper  
Part 17062**

## Spring Calipers

Stainless steel with hardened fulcrum spring and points for long life. Precision ground with threaded spool mechanism for infinite adjustment. **Lower price on 10 Packs**



**19053 Set of all 3 Calipers  
19053BX available boxed**



**19052C 8" Outside Caliper  
19052PK 8" Outside—10 PK**



**19054C 8" Inside Caliper  
19054PK 8" Inside —10 PK**



**19056C 8" Divider  
19056PK 8" Divider —10 PK**

# Pen Turning Tools

## Self Centering Vise



When drilling repeated on-center holes, this is the vise you need. Position the vise by closing it on a round rod

chucked in the drill and fasten it to the table. The LH-RH lead screw moves the jaws simultaneously, centering anything placed in the vise. Opens to 2-1/4" and will center square blanks up to 1-1/2". Space under vise jaws accepts spoil material 1/4" thick (not included). Made from Solid aluminum with brass nuts and plated steel lead screw.

**14510 Self Centering Vise**

## 8" Lathe Buffing Arbor with 3 Buffs



This 3-up buffing arbor turns any lathe with a MT2 head stock taper and 18" between centers into a 3 buff buffering/polishing center. The 3/4" spindle easily handles 3 - 8" buffs. The tail end of the arbor is center drilled to accept a standard 60 degree live center. Includes 3 buffing wheels

**22175 8" Lathe Buffing Arbor**

## Set of 3 Buffing Wheels



**Made in USA**

Big Horn's Wood Buffing Wheels come in a set of three, each clearly marked for use with Tripoli compound, White Diamond compound, and Carnauba Wax (compounds and wax not included). They are 8-Inches in diameter with a 3/4-Inch shaft hole. These buffing wheels are excellent for buffing the exterior of bowls or any item that needs to

be worked in a specific area. Use as replacement buffs for Big Horn's 22175 8-Inch Lathe Buffing Arbor, as well as other 8-Inch Buffing arbors with 3/4-Inch shafts.

**22173 Set of 3 Buffing Wheels**

## Pen Press



This pen press adjusts easily for pen length by progressively flipping pre-mounted spacers onto the self-feeding tail support. This unique design keeps spacers from being lost. Steel base mounting eliminates flexing to ensure a perfect alignment.

**14515 Pen Press**

# Drilling and Cutting Tools

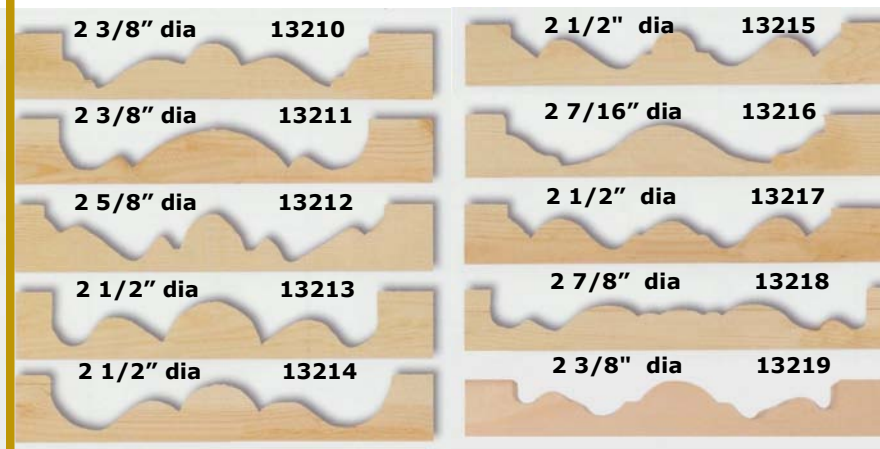
## Rosette Cutterhead



Make 3" rosettes with ease on any drill press or lathe. Unique design eliminates 2 knife adjustment hassles. Solid steel construction for years of dependable service; 1/2" shank and complete instructions. Order knives to right:

**13209 Rosette Cutterhead**

## Rosette Knives Create the Patterns Below



Produce intricate patterns on a drill press with these rosette knives. Knives are ground on opposite sides so only one is needed. Individual profiles shown below. Rosette knives are skin carded.

# Drilling and Cutting Tools

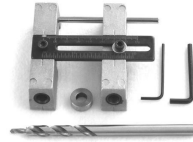
## 6" Stepped Pocket Hole Drill Bit

Flat bottomed 3/8" step drill for use with pocket hole jigs from a variety of manufacturers.

**19129 6" Stepped Pocket Drill**

**19128 HSS replacement 1/8" pilot drill for discontinued part #19127**

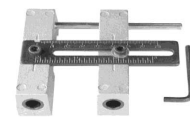
## Pocket Hole Set



Includes adjustable Pocket Hole Guide (#19125), plus Stepped 3/8" Drill (#19129) & Stop Collar

**19124 Pocket Hole Set**

## Adjustable Double Pocket Hole Guide



Adjustable pocket hole guide has hardened steel bushings for long life. Center markings for exact line-up. Adjusts from 7/8" to 2 7/8". Drill one or two perfect 15° angle holes.

**19125 Adjustable Pocket Hole Guide**

## 6" Pocket Hole Drill Bit Flat Step w/ Stop Collar



Flat bottomed 3/8" step drill for use with pocket hole jigs from a variety of manufacturers. Comes with stop collar and allen wrench.

**19130 6" Stepped Pocket Drill w/stop collar**

## Pock'It Jig



The pocket hole maker kit includes: Pock'It Jig with Integral clamp, 3/8" step drill, drill stop collar, hex wrench, square drive pocket screws and a 5" square drive bit.

**12600 Pock'It Jig**

## Drill Guide Kit



This inexpensive tool makes quick work of aligning perpendicular holes in spheres, dowels, or angled edges of work. Includes six interchangeable bushings 3/16", 5/16", 7/16", 1/4", 3/8 and 1/2".

**19115 Drill Guide Kit**

## 7 Piece Split Ring Stop Collar Set



Designed to grip the entire diameter of your drill bit; these split collars will hold where you put them every time. Sizes include 1/8", 3/16", 1/4", 5/16", 3/8", 7/16", and 1/2" plus allen wrench.

**19123 Split Ring Stop Collar Set**

## 5 Piece Hole Saw



Comes with 4 carbon hole saws each measuring 1 1/4", 1 1/2", 2", & 2 1/8".

**19076 5 PC Hole Saw Set**

## 3-in-1 Countersink Set



Three interchangeable cutters, 1/2" 5/8" and 3/4 in diameter to countersink common wood screws. Handy for de-burring metal. Saves time when only doing a few countersinks.

**19555 3-in-1 Countersink Set**

## Doweling Jig



Automatically centers when tightened down on work piece. Works on round, square or irregular shaped stock up to 2" thick. Includes 6 bushings 2 each of 1/4", 5/16" and 3/8". Excellent for drilling 2 same size holes without having to move the jig. The jig also contains 1 each of 7/16" and 1/2" unbushed holes for a total of 5 dowel sizes.

**19625 Doweling Jig**

## Scraper Handle



Handle holds scraper in the perfect arc and is as simple as turning a screw. Once the bow is set you only have to control the cutting angle. Accepts scraper up to 6 inches in length.

(Scraper not included - See page 30.)

**19990 Scraper Handle**

## Hinge Bits



Self-centering & accurate. Body has screw top for ease of cleaning & changing bit. Replaceable bits. Bodies are stamped with size. Assembled & packaged in USA from foreign & domestic parts. Hinge bits are carded.

**19140 #3 hex shank for #3 and #4 screws**

**19160 #5 hex shank for #5 and #6 screws**

**19161 #9 hex shank for #8, #9 and #10 screws**

**19143 #12 hex shank for #12 screws**

**19144 #14 hex shank for #14 screws**

**19148 1/4" hex shank**

**19149 5mm hex shank**



# Drilling and Cutting Tools - W. L. Fuller

**High Quality  
By W.L. Fuller  
Made in the USA**



## Complete Tapered Countersinks

18900	#5 Screw Size	18925	#10 Screw Size
18905	#6 Screw Size	18930	#12 Screw Size
18910	#7 Screw Size	18935	#14 Screw Size
18915	#8 Screw Size		
18920	#9 Screw Size		

## Drills Only

18940	#5 Taper Drill Only
18945	#6 Taper Drill Only
18950	#7 Taper Drill Only
18955	#8 Taper Drill Only
18960	#9 Taper Drill Only

## Plug Cutters (1/4" Shank)

19150	1/4" Plug Cutter
19151	5/16" Plug Cutter
19152	3/8" Plug Cutter
19153	7/16" Plug Cutter

## (1/2" Shank)

19154	1/2" Plug Cutter	19157	3/4" Plug Cutter
19155	9/16" Plug Cutter	19158	7/8" Plug Cutter
19156	5/8" Plug Cutter	19159	1" Plug Cutter

## Quick Change Taper Drill Sets By W.L. Fuller

W. L. Fuller, Inc. has been manufacturing, recommending, supplying, and distributing tools to cut woods, plastics and metals for over 60 years. They produce the best quality tools made in the USA. to predrill, countersink, counterbore and plug for screws and bolts of all different sizes and shapes. Their High Speed Taper Point Drills are specifically designed to predrill for wood screws of various sizes and lengths. Their Four Flute Countersinks, designed to mount on the Taper Point Drill, combine pre-drilling for the screw threads, clearance drilling for the screw shank, counter-boring for a wood plug (if needed) and countersinking for the screw head - in one operation. The plug cutters are designed to produce wood plugs accurately sized to match their counterbores, so the plug fits right every time. Made of the best quality steels, and heat treated for long tool life, the tools are designed to save you time by eliminating steps and increasing tool life.

This set is designed to be used with wood screw sizes #5, #6, #7, #8, and #9. Includes quick change chuck, countersinks, counterbores, tapered drills, stop collar and plug cutter.



**18938 #10 5Pc Taper Drill Set**

**Set of 3  
Countersinks**  
with matching Quick  
Change HSS Taper Point  
Drills for 6, 8 & 10  
Screws,  
3/32" Hex Key  
and 3/8" diameter Plug  
Cutter



**18937 Set of 3 Countersinks/Drills**

This set is designed to be used with wood screw sizes #6, #8, #10, #12, and #14. Includes quick change chuck, countersinks, counterbores, tapered drills, stop collar and plug cutter.



**18939 #11 5Pc Taper Drill Set**



**Made in the USA**

# Drilling and Cutting Tools

## 4 Pack Abrasive Rolls



Don't waste time tearing sheets of sandpaper into strips or looking for the grit you need! This convenient dispenser is loaded with four 1" x 20' rolls of cloth backed aluminum oxide abrasive. Perfect for spindle, pen, or any turning where small strips of abrasive are needed. Each dispenser pack contains one roll of 150, 240, 320, and 400 grit. Just tear off the length of abrasive strip you need.

**22180 4 Pk Abrasive Rolls**

## Sanding Block



Known as the "Preppin' Weapon" for years in the automotive industry this versatile sanding tool is available to woodworkers. Made from high-impact ABS plastic and sized to fit a ¼ sheet of plain-backed 9"x11" sandpaper, its design can cut sandpaper waste by up to 36%. Spring Clip design holds single or multiple sheets of sandpaper equally tight. Save time by stacking up to 4 sheets & tearing them away one by one.

**Made in USA.**

**19500 Preppin' Block**

## SandDevil



Made of tough injection-molded thermoplastic, this patented sanding tool makes it easy to change standard 3" x 21" abrasive belts quickly. With its multi-surface design, SandDevil provides easy access to flat, curved and angled surfaces, including difficult-to-reach corners and edges.

**Made in USA**

**19520 SandDevil**

## 7 PC Countersink Set



7 piece tapered countersink bit set includes sizes 5, 6, 7, 8, 9, 10 & 12. Complete with stop collar. Fitted in wood box.

**13200 7 Pc Countersink Set**

## Diamond Burr Sets

World's hardest abrasive, diamond burrs are long lasting. Use in flex shafts, moto tools or drills. Has ⅛" shanks in a large selection of shapes. Comes with plastic



**19401 20 piece Diamond Burr Set**

## Mitchell Abrasive Cords and Tapes

Impregnated with aluminum oxide, silicon carbide, and crocus for ultrafine polishing, cords and tapes are ideal for narrow slots, grooves, small holes, and curved surfaces on metal, plastic and wood.



*As packaged*

**Mitchell #50 Cord .070 x 12 Feet (Fine Grit) Part# 19490**

**Mitchell #50 Cord .070 x 50 Feet (Fine Grit) Part# 19491**

**Mitchell #52 Cord .055 x 12 Feet (Med Grit) Part# 19492**

**Mitchell #52 Cord .055 x 50 Feet (Med Grit) Part# 19493**

**Mitchell #56 Tape 3/32 x 12 Feet (Med Grit) Part# 19494**

**Mitchell #56 Tape 3/32 x 50 Feet (Med Grit) Part# 19495**

**Mitchell #58 Tape 3/16 x 12 Feet (Med Grit) Part# 19496**

**Mitchell #58 Tape 3/16 x 50 Feet (Med Grit) Part# 19497**

**Perfect for....**

**Woodworker**

**Machinist**

**Jeweler**

**Hobbyist**

**Handyman**

**Sanding**

**Water Fittings**

**Removing Rust**

**Pipe Threads**

**And more!**



# Drilling and Cutting Tools

## Sanding Drum Sets & Replacement Sleeves

All sanding drum kits feature aluminum oxide resin bond spiral no-lap sleeves. Self expanding rubber cushioned drums have 1/4" shank. Excellent for sanding holes, edges, contours, irregular shapes and wider surfaces. Each set includes 1 set of replacement sleeves. Maximum 2500 RPM



**19530 15 Piece General Purpose Set**  
Includes sizes 1/2"x1/2", 3/4"x1", 1"x1", 1-1/2"x1-1/2", 2"x1-1/2"

### Replacement Sleeves

**19529** 1/2"x1/2"; 3 fine; 3 med; 3 coarse  
**19531** 3/4"x1"; 3 fine; 3 med; 3 coarse  
**19532** 1"x1"; 3 fine; 3 med; 3 coarse  
**19533** 1-1/2"x1 1/2"; 3 fine; 3 med; 3 coarse  
**19534** 2"x1-1/2"; 3 fine; 3 med; 3 coarse



**19535 12 piece Long Sanding Drum Set**  
Includes sizes 1/2"x2"; 3/4"x2"; 1"x2", 1-1/2"x2"

### Replacement Sleeves

**19536** 1/2"x2"; 3 fine; 3 med; 3 coarse  
**19537** 3/4"x2"; 3 fine; 3 med; 3 coarse  
**19538** 1"x2"; 3 fine; 3 med; 3 coarse  
**19539** 1-1/2"x2"; 3 fine; 3 med; 3 coarse



**19540 9 piece Super Long Sanding Drum Set**  
Includes sizes 1/2"x3", 1"x3", 1-1/2" x 3"

### Replacement Sleeves

**19541** 1/2"x3"; 3 fine; 3 med; 3 coarse  
**19542** 1"x3"; 3 fine; 3 med; 3 coarse  
**19543** 1-1/2"x3"; 3 fine; 3 med; 3 coarse

## Shop Accessories

### Press Rollers



The press roller features 2 polypropylene rolls to press both edges tightly when laminating. 12" long aluminum handle with non-slip handle grip.

**19603 Double Press Roller**



Specially designed for applying pressure on wood & plastic laminates. Measures 1 1/2" diameter x 3" wide x 12" long.

**19600 J-Roller**



The curved handle is specially designed for applying added pressure on wood & plastic laminates. Measures 1 1/2" diameter x 3" wide x 14" long.

**19601 Press Roller with curved handle**

Super duty press roller has three 2 1/4" diameter resilient rollers. Heavy metal twist locking handle adjusts from 18" to 27" long.

**19602 Heavy Duty Press Roller**

### J-Rollers

Designed for applying pressure on veneer, carpet, wall paper and plastic laminates. Reaches into corners. Never leaves marks on surfaces. Available in stainless steel or polyethylene.

**19595 1-1/2" PE Roller**  
**19596 1-1/2" SS Roller**  
**19597 3-1/2" PE Roller**  
**19598 3-1/2" SS Roller**



### Panel Toter

Carry plywood & wallboard safely & easily. Eliminate problems with balance and visibility when transporting large sheets of material. Made from cold formed steel with angled steel shaft to keep hands & knuckles away from the panels. Carrying handle has vinyl grip.

**19609 Panel Toter**



# Shop Accessories



## Genuine: Space Balls

### Why you need Space Balls

1. Automatically center panels during the assembling process.
2. Expand and contract with the wood to eliminate cracking of glue joints
3. Reduce call-backs for loose panels.

**19451 100 Pk - Space Balls**  
(0.26" diameter fits standard stile and rail.)

## High Pressure Glue Injector

Furniture repair without disassembly! Easily repair furniture joints, veneers and cabinetry and more. Solid brass 1/32" brass nozzle, high impact plastic body, removable plunger and nozzle for easy cleaning. **Made in USA.**



**19405 High Pressure Glue Injector**  
**19403 1/32" Replacement Tip**  
**19404 1/16" Replacement Tip**

## Glue Brush & Bottle



1/2" brush head of washable horsehair bristles. With cap to prevent drying between jobs. 8 oz. Plastic bottle

**19041 Glue Bottle With Brush Applicator**



## Biscuit Slot Head & Bottle

Fill a biscuit slot with just one squirt! Includes cap. 8 oz. Plastic bottle.

**19042 Glue Bottle with Biscuit Slot Head**

## Tapered Tip & Bottle



Fine tip allows you to apply glue in the exact spot you need it. Comes with attached cap to prevent drying between jobs. 8 oz. Plastic bottle

**19043 Bottle with Tapered Tip**

## Glue Roller & Bottle



Non stick 2-1/2" wide roller spreads glue evenly and quickly on flat surfaces. 8 oz. Plastic bottle.

**19044 Glue Roller Bottle**

## Glue Spreader Kit



Kit can solve nearly all gluing problems. Use for dovetails, biscuit joints, wide or narrow surfaces, etc. Kit includes one 8-oz Glue Bottle and one each: Glue Roller Head, Biscuit Tip, Pinpoint Tip, Dovetail Tip, 1/4" Dowel Hole Tip, 5/16" Dowel Hole Tip, 3/8" Dowel Hole Tip, 7/16" Dowel Hole Tip, 1/2" Dowel Hole Tip, Glue Tip Clean Bottle, Cover, and Connect Sleeve plus handy Storage Base Block.

**19121 Glue Spreader Set**  
(Replacement for 19119)



## Glue Injector Kits

For injecting glue into hard to get places and veneers. Set contains 6, 15, 30cc syringes & a bellows. **Made in USA.**

**19409 4 Pack (6, 15 & 30cc along with 1 bellows)**



## 2 PK Glue Bellows w/18 & 20 Gauge Needle Tips

For injecting glue into hard to get places and veneers. 1 ea 18 & 20 gauge needles.

**Made in USA.**

**19406 2 PK Glue Bellows**



## 30 Ounce Glue Container With Brush

Large capacity glue container with convenient 1" wide brush and cover. Keeps glue ready at all times. No need to clean between jobs.

**19040 Glue Container with Brush**



## Glue Spreaders-Set of 6

The tip of these glue spreaders is flexible and can be used with various amounts of pressure. Dried glue just chips off the polypropylene plastic, making them easy to clean for reuse. 6" long

**19118 Glue Spreaders, set of 6**



**19407B 12 pack 15cc Syringes**

## Glue Brushes



Permanently bonded natural hair bristles. Available in gross lots of 144. **Made in USA.**

**13025 1/4" Glue Brush**  
**13030 1/2" Glue Brush**



# Shop Accessories



## 25 PC Miter Clamp Set in Carrying Case

Quick and easy to apply made from tempered spring steel, these sharp ended clamps hold by spreading the pointed ends apart to engage. Set includes one spreader and 4 clamps each of the 6 sizes listed. (24 clamps total)

**19680 25 pc Miter Clamp Set**

**19681 Spring Miter Clamp Spreader**

**19682 4 pc 1/2"-3/4" Miter Clamps**

**19683 4 pc 11/16"-1" Miter Clamps**

**19684 4 pc 7/8"-1 3/16" Miter Clamps**

**19685 4 pc 1"-1 5/8" Miter Clamps**

**19686 4 pc 1 3/4"-2 3/8" Miter Clamps**

**19687 4 pc 2 1/2"-3 3/8" Miter Clamps**

## Miter Clamp Pliers

The same quality pliers which comes with our 17 Piece Miter Clamp Set ( on right ) now sold separately. **19675**

## Miter Clamp Springs –Sold as 8 Pks

Use with Miter Clamp Pliers (above) or as additional clamps for use with 17 piece set at right.

**19676 8 PK 1-1/4" Clamps**

**19677 8 PK 2" Clamps**

**19678 8 PK 2-3/4" Clamps**

**19679 8 PK 3-1/2" Clamps**



## 17 Piece Miter Clamp Set



Use Big Horn's 17-piece miter clamp set as a quick and easy way to clamp mitered corners. Works great on trim and moldings; simply choose the appropriate size spring clamp and use the pliers to open and easily position the clamp on the project. Spring pressure holds project while adhesive sets. Includes 1 pliers and 4 each of the following springs: 3-1/2-inch, 2-3/4-inch, 2-inch, and 1-1/4-inch. Comes in sturdy plastic storage case.

**19674 17 Pc Miter Clamp Set**

## 4 - Way Panel Clamp

This is the ideal clamp for gluing table tops, furniture panels and doors. When 2 or more of these are used buckling can be totally eliminated.



The 4 - way action applies even pressure to glue joints while holding your panel absolutely flat. Will accept material from 1/2" to 3 1/2" thick of unlimited length (The length is determined by the rails you supply).

**19622 4 - Way Panel Clamp**



**19623 Extra Clamp Blocks (Pair)**

## Multi Angle Nylon Belt Clamp

The strong nylon belt, 13 feet in length, will clamp irregular shaped objects like chair legs with ease.

**19632 Multi Angle Nylon Belt**



## Spring Clamps

Spring action clamps with swivel tipped jaws to hold onto your work firmly.

**19088 1-1/2" clamp**

**19090 2-1/4" clamp**



## Frame Clamp

Clamps frames from 5" x 7" to 26" x 30". Four rugged, no-mar jaws fit into the cross arms; adjust to virtually any size. Tightening the clamp applies equal pressure to all joints. Jaws reverse to handle thin molding.

**19635 Frame Clamp**

## Right Angle Clamp

Lever action jaws hold thicknesses up to 3/4". Easily clamps right angle joints. Excellent for shelving unit projects.

**19636 Right Angle Clamp**



## Drill Press Vise Clamp



Strong, Fast acting 9" clamp, with 3 1/2" throat attaches easily to your drill press or other shop fixtures.

**19630 Vise Clamp**

## Miter Clip by Trim Clip

Achieve tight miter joints with Trim Clip's Miter Clip. Simply apply wood glue to cut trim pieces, then align the glued trim pieces. Insert your mitered corner in the built in slot of the Miter Clip and squeeze handles until fully locked. If desired, you can position the Miter Clip vertically, allowing you access to nail the joint together while the pieces are still clamped. Clamp leaves negligible marks. Illustrated directions on package back.

**Made in USA.**

**19671 Miter Clip**



# Shop Accessories

## Plastic Bench Dogs



These "Low Boy" bench stops are just 1/2" high so they hold solid but stay out of your work space. Just drop them into any standard 3/4" hole. **Sold in sets of 4.**  
**19113 Plastic Bench Dogs**

## Wood Care Polish Safe, Non-Toxic, Biodegradable Fresh Lemon Scent



Use to polish, clean, condition, protect, preserve furniture, cabinetry, wood paneling—all finished wood surfaces. Contains no wax or silicone. 12oz. plastic bottle.

**22165 Wood Care Polish -12 Oz**

## Block Oil Fresh Lemon Scent

Protect and restore any wood or bamboo food preparation surface such as cutting boards, butcher blocks, salad bowls, etc. Block Oil is a blend of all natural, non-toxic oils that prevent cracking, drying, or absorbing food odors.

**22163 Block Oil -12 Oz**



## WOOD FINISH Safe, Non-Toxic, Biodegradable All Natural Ingredients

A safe finish for the protection of unfinished outdoor wood furniture. Use to repel rain, condition, seal, prevent cracking and drying, enhance natural beauty, warmth, grain, and luster. Wood Finish is a unique blend of all natural oils that penetrates and seals the wood. It preserves and brings out the beauty of the wood without harsh chemicals or solvents. Additional uses include indoors, on new or previously oiled, unfinished wood. Comes in plastic bottle.

**22167 Wood Finish-16 Oz**



## Aluminum Bench Dogs



Sold in pairs, these easy to install stops fit a standard 3/4" hole. No bench holes, no problem. Just drill where needed. The side mounted spring will hold stop in place.

**19112 Small Bench Dogs**

## Pinch Dogs



These simple steel clamps keep boards tightly together; for gluing panels, tables, bench tops, and others when driven into end grain along a joint.

**Sold in sets of 6.**

**19654 1-1/2" Pinch Dogs**

**19655 2" Pinch Dogs**

## 6 Pack Ball Bearings



6 pack of ball bearings rotate in all directions for creating work guides.

**19100 5/8" roller—55 lb Capacity(6 Pk)**

**19102 1" roller—75 lb Capacity(6 Pk)**



## Miniature Woodworking Set

Miniature Woodworking Set includes: Miniature Plane, Miniature Bevel, Miniature Square and Miniature Marking Gauge. Comes in wood box. Makes a great gift.

**Part 13301**



## 3" PU Swivel Caster 220 lbs



The double locking feature allows you to lock the wheel, plus the swivel action locks too. Solid polyurethane tire. Wheel diameter 3". Total height 4". Ball bearing wheel plus ball bearing swivel. 4 hole mounting plate. Load capacity 220lbs each. Sold individually.

**Part 19786**

## 3" PU Fixed Heavy Duty Caster 220 lbs



Solid polyurethane tire. Wheel diameter 3". Total height 4". Ball bearing wheel. 4 hole mounting plate. Load capacity 220lbs each. Sold individually.

**Part 19788**



## Riffler File Sets

**13100 10 pc  
small riffler set**

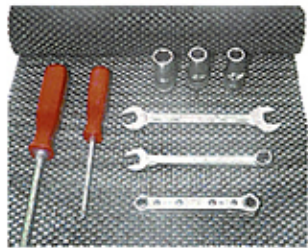


**13105 5 pc large  
riffler set**



# Shop Accessories

## Tool Box Liner



Large 16" x 74" heavy-duty non-slip liner protects tools and the tool box itself. Cut to size with scissors. Washable & mildew resistant.

(Tools not included)  
**19410 Tool Box Liner**

## Saw Horse Brackets



Rugged, sturdy, and made to last. Easy to setup and use. Versatile—can be used as a work top or support. Can be assembled and disassembled without tools.

**19690 Saw Horse Brackets**



## Radius Plane



Used for corner rounding and trimming. Full instructions are on the package.

**19084 Radius Plane**

## Water Stone Holding Jig



Adjustable jig securely holds water stones when sharpening. Non-slip design.

**19048 Water Stone Holding Jig**

## Double Edge Laminate Trimmer



Great for removing the excess width of edge banding tape from your just-taped project. Trimmer has a cutting range of 1/2" to 1". Cuts both sides at the same time. One side cuts straight while the other side can be adjusted for a tapered cut.

**19039 Double Edge Laminate Trimmer**

## End Band Cutter



Place the end trimmer on the end of the panel; press the lever firmly down to get a clean, exact, and high quality cut on all the corners. Use for trimming PVC, melamine, polyester, veneer, etc. tapes up to 0.5 mm thick.

**19037 End Band Cutter**

## 2 in 1 Edge Trimmer



Multi-blade trimming tool will make quick work of rounding the 90 degree edges of your next project.

**19038 2 in 1 Edge Trimmer**



## Corner Chisel

Cuts exact 90° corners for a perfect fitting hinge plate.

**19592 Corner Chisel**

## Sliver Gripper



Tweezers made from spring-tempered stainless steel for maintaining perfect alignment. Precision ground points provide pin-point gripping. Comes in plastic holder. Lifetime guarantee. Blister carded. **Made in USA.**

**19074 Sliver Gripper**

## Dead Blow Hammers



Shot filled, perfect for glue project assembly.

**19096 Approximate wt: 14 oz.**

**19097 A [DISCONTINUED] wt: 20 oz.**

## Honing Guide

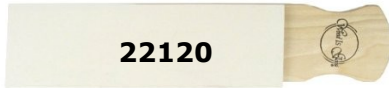


Securely hold chisels and plane irons for the correct angle. Rolls smoothly on sharpening stone. Compact jig will put perfect angles on tools from 1/8" to 2 3/4".

**19117 Honing Guide**

# Shop Accessories

## Hone Strops by *Wood Is Good* Made in the USA



**22120**



**22126**



**22118**



**22122**

Hone strops have rubber-like material to eliminate the inconsistencies of leather and will outlast leather strops. Renew surface with detergent & water. Strops are bound to a wooden handle with rounded edge for honing insides of gouges & a 45° edge for the inside of V tools.

**22118 Small hone strop — 1½" x 7"**

**22120 Large hone strop — 2½" x 8½"**

**22122 White powder strop abrasive is aluminum oxide with no wax binders — 1 oz**

**22126 White strop abrasive bar — 1¼" x 1" x 5" white bar is aluminum oxide in wax base. Used for more rapid sharpening**

## Mallets by *Wood Is Good*

Quiet mallets, literally unbreakable. Heads are made of tough urethane material designed to be quiet and yet transmit the maximum blow. Polished hardwood handles. 12 & 18 oz. head is 2¾" diameter. 20 & 30 oz. head is 3½" diameter. Made in USA.

**22106 12 oz Mallet**

**22110 20 oz Mallet**

**22108 18 oz Mallet**

**22112 30 oz Mallet**



## Knobs, Handles & Levers

*For making jigs and fixtures.*

*All knobs are made from hard, black plastic.*



**19700B 1-1/4" Triangle Knob**

**Insert 10-24**

**19715B Triangle Knob 1/4"-20**



**19701B 2" T-Knob 1/4" - 20**

**19703B 2" T-Knob 5/16" - 18**

**19702B 2" T-Knob 3/8" - 16**



**19705B 7-Star Insert 1/4" - 20**

**19704B 7-Star Insert 5/16"-18**

**19706B 7-Star Insert 3/8" - 16**



**19710B 7 - Star Stud 1/4" - 20**

**19712B 7 - Star Stud 5/16" - 18**

**19714B 7 - Star Stud 3/8" - 16**



**19720B Round Ball Knob 5/16"-18**



**19716B 4 Point Knob 1/4"-20**

**19717B 4 Point Knob 5/16"-18**



**19722B 5 Point Knob 10-24 Thread**  
*Fits Aluminum Blast Gates*



**19725B Post Handle 5/16"-18**

**( 4-1/2" Long )**



**19728B Ratchet Lever-Nut**

**1/4" - 20**

**19727B Ratchet Lever-Nut**

**5/16"-18**



**19729B Ratchet Lever-Bolt**

**1/4" - 20**

**19726B Ratchet Lever-Bolt**

**5/16"-18**



**19735B 1/4" T-Nut (10 Pack)**

*Fits Pro Grip Track*

## T-Bolts

**T-Bolt 1/4-20 x 1-3/4**

**Part 19762**

**T-Bolt 1/4-20 x 2-1/4**

**Part 19764**

**T-Bolt 5/16-18 x 1-1/2**

**Part 19772**

**T-Bolt 5/16-18 x 2-1/2**

**Part 19774**

**T-Bolt 5/16-18 x 3-1/2**

**Part 19776**

*(Fits 19814 & 19816 - page 4)*





# Shop Accessories

## ProGrip Clamps and Accessories



ProGrip Straight Edge clamps offer 3 progressive clamping pressures all with one hand operation, and are made from durable, lightweight extruded aluminum for strength and rigidity. Available in 24", 36", and 50" lengths, they offer a secure and versatile clamping system, and can also be used as guides for routers, circular saws, and jigsaws. They even have a measuring rule for checking lengths and setting stop positions.

Designed with built in T-slots the ProGrip clamps are even more versatile when used with our optional accessories such as: Featherboard Kit, Universal Base, Side by Side Adapters, Adjustable Stop Block, T-Slot Fence, and Wide Jaws. **Sold in packs of 4 only.**

**19824P** **DISCONTINUED** (61CM)

**19826PK ProGrip 36" (91 CM)**

**19828P** **DISCONTINUED** (27 CM)

### Featherboard Kit



For use with our ProGrip clamps and accessories whenever

you need an extra hand to hold your stock in place. Included hardware attaches this featherboard to any ProGrip clamp.

**19831 Featherboard**



### Wide Jaws

Distribute clamping pressure over a wider surface and put an end to pressure marks for ever. Also, they can be useful for getting your clamps square with your project piece. Built in mounting holes match the jaws of our ProGrip clamps. Mounting screws included.

**19839 Wide Jaws**

### Side to Side Attachment Kit



By using these ingenious Z-clips two ProGrip clamps can be attached to each other side by side (one inverted and one right side up) thus creating an unchanged height profile with both handles at the same end. Various length clamps can even work together to allow you to effectively create a strong, extra wide work surface if needed. Each kit includes six Z-clips.

**19835 Side to Side Attachment Kit**

### Universal Base



By attaching this base plate to your hand held saw or router you can be certain it will accurately follow the straight edge of your ProGrip clamp every time. The universal base measures approximately 8 x 12 inches and can easily be drilled and cut to fit almost any router or circular saws.

**19833 Universal Base**

### Stop Block



Fastens securely to our ProGrip clamp line eliminating even slight movement when used as a accurate router stop. These stops can be used in pairs to quickly replicate multiple identical length cuts

**19837 Stop Block**

### Band Saw Fence



Conveniently sized for use on a band saw or router table this ProGrip accessory measures 3 1/2 x 18 inches. It is made from lightweight extruded aluminum and is designed with T-Slots along the top edges making this fence ideal for use with hold down feather boards and stop blocks.

**19838 Fence**



### 109" Straight Edge

**#19830**

#### Power Tool Guide

Cutting sheet materials down to size often requires using a circular saw. When the cut needs to be length-ways on the sheet, this guide is your answer. Measuring just over 109" long, you can even clamp it diagonally on the sheet and make your cut. Each end is held independently with an over centre toggle clamp. Clamp capacity is 1-3/4". A three point contact connector provides alignment and stiffness over 109" length. Clamps slide full length of guide. For cuts under 55" long, use one of the two guide rails. Wrench-free material thickness adjustment.



*Patented*

**19830 109" Straight Edge - Includes 2 Toggle Clamps**

# Crown Tools from England



## Corner Cleaning Chisels

Dog leg chisels are ideal for cleaning corners, grooves and moldings. Bent left & right this set enables access to positions where normal chisels will not work. Mounted with small rosewood handles.

**21030 Pair of 1/4" Corner Cleaning Chisels**



## Registered Mortise Chisels



Hot forged from high carbon steel, taper ground with Ash handles and a steel hoop at the striking end to reduce mushrooming. A leather washer is fitted between the handle and the blade to absorb shock.

**21007 1/4" Mortise Chisel**  
**21008 5/16" Mortise Chisel**  
**21009 3/8" Mortise Chisel**  
**21010 1/2" Mortise Chisel**  
**21012 5/8" Mortise Chisel**  
**21015 3/4" Mortise Chisel**  
**21017 7/8" Mortise Chisel**  
**21020 1" Mortise Chisel**  
**21025 1-1/4" Mortise Chisel**  
**21026 1-1/2" Mortise Chisel**  
**21027 2" Mortise Chisel**

## 4 PC Boxed Butt Chisels



These unique small chisels are ideal for very precise hand cutting & paring of joints. Overall length is 6" with a 3 1/2" blade and a 2 1/2" rosewood handle. Sizes include 1/4", 1/2", 3/4", and 1".

**21005 4 PC Boxed Butt Chisels**

## 4 PC Boxed Chisel Set

Bevel edge wood chisels are hot forged from high carbon steel with brass ferrules and rosewood handles. Set includes 1/4", 1/2", 3/4" and 1".

**21000 4 Pc Boxed Chisel Set**



## Corner Chisel



Traditional corner chisel for cutting recesses to accommodate hinges, mortises, locks, etc. with Rosewood handle.

**21070 Corner Chisel**

## 1/2" Skew Chisels Set



Skew wood chisels are used to give a slicing action for the precise paring of a joint and for detailed finishing. The sharp point allows easy access into tight corners. Rosewood handles.

**21060 Pair of 1/2" Skew Chisels**

## Bevel Edge Wood Chisels



Traditionally made taper ground wood chisels are hot forge from high carbon steel with amber shatterproof handle.

**21035 1/4" Bevel Edge Chisel**  
**21040 1/2" Bevel Edge Chisel**

**21045 3/4" Bevel Edge Chisel**  
**21050 1" Bevel Edge Chisel**



# Crown Tools from Sheffield, England

## Powder Metallurgy Tools

The "PM" in Pro-PM stands for **Powder Metallurgy**, a process for making steel that produces a degree of hardness which is significantly harder than HSS. Crown and other independent testers have found their Pro-PM tools will hold their edge up to three times longer than similar tools made from HSS. Ergonomically designed stained black ash handles. If saving sharpening time and extending tool life are important, then Crown Pro-PM turning tools are what you have been looking for.



### 5 PC Powder Metallurgy Turning Set

Includes one each of the following tools:  
25000, 25015, 25028, 25050, 25069  
**25280 5PC - Powder Metallurgy Turning Set**

### Powder Metallurgy Turning Tools 16" Handles



**25000 3/4" PM Roughing Out Gouge**  
**25026 1/4" PM Bowl Gouge**  
**25030 3/8" PM Bowl Gouge**  
**25035 1/2" PM Bowl Gouge**  
**25037 3/4" PM Bowl Gouge**  
**25039 1" PM Bowl Gouge**  
**25151 3/8" PM Ellsworth Gouge**  
**25155 1/2" PM Ellsworth Gouge**



### Powder Metallurgy Turning Tools 12-1/2" Handles



**25015 3/8" PM Spindle Gouge**  
**25020 1/2" PM Spindle Gouge**



**25028 3/8" PM Short Bowl Gouge**



**25069 3/4" PM Skew Chisel**



**25056 3/4" PM Round Nose Scraper**



**25137 3/4" PM Square End Scraper**



**25050 3/16" PM Diamond Parting Tool**

## Cryogenic Hollowing Tools

### Mini Revolution Hollowing System



### Spiraling/Texturing System



Designed for producing smaller forms and made from the highest quality materials. It incorporates the "Super Ring" and linkage system, giving the turner a high level of versatility in use when producing open and grain vessels in both seasoned and un-seasoned wood, such as bowls and vases and hollow forms turned through a small opening. The scraping cutter adds versatility for cutting in cross grain forms and is an efficient cutter for finishing the inside of forms after initial shaping and material removal. 10" handle; 16-1/2" overall length. Instructions included.

**Part 24800**

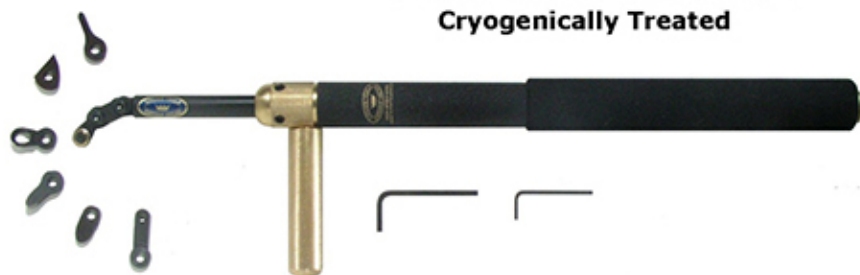
Great for small and medium size hollowing. Comes with 2 hollowing probes: 1 shear scraping tip and an egg cutter for heavier cuts. All tips are cryogenically treated for vastly improved wear resistance. 10" handle, 17-1/2" overall length. Includes instructions.

**Part 24650**

# Crown Tools from Sheffield, England

## Crown Revolution

Cryogenically Treated



Using the 5 cryogenically treated tips, the wood turner has the flexibility to configure this versatile Crown Hollowing System for almost any hollowing situation. 17" handle plus brass side handle/counterweight. Instructions included.

**24801 Crown Revolution**

*Additional accessories available soon.*

## Crown Spiraling & Texturing Systems

Apply stunning Spirals and Textures to your turnings. Instructions included.

**Full Size System** includes: Tooth Texturing Wheel (1/18) two Spiraling Wheels (1x18) and (1x30)  
**24665 Full Size** - (Overall length 19")

**Mini System** includes: 1x17 & 1x27 Tooth Wheels  
**24662 Mini** - (Overall length 9")



## "Beaver" Deep Hollowing Tools

Designed for deep hollow forms, these tools have a polished H.S.S. adjustable top section which gives complete control of the depth of cut. An instruction leaflet is provided.



**24152 Beaver Deep Hollowing Tool**



**24154 Beaver Deep Swan Neck Tool**



**24153 Beaver - Spare Tip**

## Heavy Duty Scrapers



This Round Nose Scraper has a 1 1/2" wide blade made from 3/8" thick HSS which keeps vibration to a minimum. 14" handle with 7" blade.

**24134 1-1/2" Domed Nose Scraper**

**24135 1-1/2" Round Nose Scraper**



This Bowl Finishing Scraper has a 1" wide blade made from 3/8" thick HSS making it the perfect tool for removing the ridges on the inside of bowls. 14" handle with 7" blade.

**24140 1" Bowl Finishing Scraper**

## Roughing Out Gouge



The ideal tool for preliminary work to produce a round shape from square edge spindle stock. 14" handle with 6" blade.

**24005 1 1/4" Roughing Out Gouge**

## Bowl Gouges



Among the best available world-wide, these bowl gouges have the edge & balance needed for the finest projects. They have a 14" handle and 10" blade.

**24145 1/4" Bowl Gouge**

**24035 1/2" Bowl Gouge**

**24030 3/8" Bowl Gouge**

**24037 3/4" Bowl Gouge**

## Ring Tool



With a dual bevel 'High Speed Steel' ring, this 1" Ring Tool provides a superb finish when hollowing into end grain. Flat or curved shapes can easily be accommodated. 14" handle with 11" blade.

**24090 1" Ring Tool**

## Ellsworth Signature Gouge



Developed in conjunction with David Ellsworth this gouge has an 8" flute with a side grind which enables both roughing and fine cuts to be achieved. 17 1/2" handle with 10" blade.

**24151 3/8" Ellsworth Signature Gouge**

**24155 1/2" Ellsworth Signature Gouge**



# Crown Tools from Sheffield, England

## Pepper Mill Tool



Our new Pepper Mill Tool is designed specifically to create the perfect notch needed when making mills using the **Crush Grind** salt and pepper mechanisms. Manufactured in Sheffield, UK by Crown Tools, LTD 8½" handle

**24162 Pepper Mill Tool**

## Parting Tool



Crown's unique 1/16" Parting tool has 4" handle with 5" blade

**24045 1/16" Parting Tool**

## Melvyn Firmager - Shaper/Parting



1/16" Thick - 7" long blade with a special grind on the end. Overall length of approx 11". Instructions Included.

**24047 Melvyn Firmager Tool**

## Multi-Tip Scraper



Developed to offer the full range of scraper shapes on one handle. With round, square & pear shaped cutters. 8½" handle

**24150 Multi-Tip Scraper**

## Guy Ravine Chatter Tool



Easily enhance small turned work & create visual interest with this chatter tool designed by pro turner Guy Ravine. 2 tips allow a variety of patterns to be created. Includes hints from the designer on use and sharpening. Overall length approx 12"

**24401 Guy Ravine Chatter Tool**

*The tools below have an 8 1/2" handle like the 24150 scraper on above. Finished lengths measure from 14 3/4" to 15", depending on the tool.*



**24010 1/4" Spindle Gouge**

**24015 3/8" Spindle Gouge**

**24020 1/2" Spindle Gouge**

**24025 3/4" Spindle Gouge**

**24027 3/8" Detail Gouge**

**24028 1/2" Detail Gouge**



**24000 3/4" Roughing Out Gouge**



**24055 1/2" Round Nose Scraper**

**24056 3/4" Round Nose Scraper**

**24057 1" Round Nose Scraper**



**24060 3/4" Side Cutting Scraper**



**24062 3/4" Diamond Side Cutting Scraper**



**24136 1/2" Sq End Scraper**

**24137 3/4" Sq End Scraper**

**24138 1" Sq End Scraper**



**24085 1/2" Ring Tool**



**24040 1/8" Parting Tool**

**24052 1/4" Parting Tool**



**24042 1/8" Diamond Parting Tool**

**24050 3/16" Diamond Parting Tool**



**24092 3/8" Three Point Tool**

**24093 1/2" Three Point Tool**



**24095 1/4" Bead Forming Tool**

**24100 3/8" Bead Forming Tool**



**24105 1/4" Combo Left & Right Captive Ring Tool**

**24110 3/8" Combo Left & Right Captive Ring Tool**



**24082 1/4" 80° Hollowing Tool**

**24083 1/4" 45° Hollowing Tool**

**24084 1/4" Straight Hollowing Tool**



**24065 1/2" Skew Chisel**



**24070 1" Skew Chisel**



**24075 1/2" Square Chisel**



**24129 1/2" Oval Skew Chisel**

**24130 3/4" Oval Skew Chisel**

**24131 1" Oval Skew Chisel**

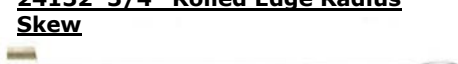
**24133 1-1/4" Oval Skew Chisel**



**24080 1/2" Diamond Point Chisel**



**24132 3/4" Rolled Edge Radius Skew**



**24158 Alan Beecham Skewchigouge**

# Crown Tools from Sheffield, England



## 5 PC Carbon Steel Woodturning Set

These traditionally 1/2 inch tools are produced from high quality carbon steel with a Rockwell hardness of 57/60. Mounted on 8" lacquered Ash handles with a brass ferrule for added strength.

**24270 Woodturning Set**

## 5 PC High Speed Steel Woodturning Set

HSS with Rockwell 62/64, this versatile set includes: 3/4" roughing gouge, 3/8" spindle gouge, 1/4" parting tool, 1/2" round nose scraper and 1/2" skew chisel.

Packed in display box.

**24280 5Pc Turning Set**



## 8 PC High Speed Steel Woodturning Set

HSS with Rockwell 62/64, this versatile set includes: 1 each 3/4" roughing out gouge, 1/4" spindle gouge, 1/2" spindle gouge, 1/4" parting tool, 1" square end scraper, 3/4" round nose scraper, 1/2" skew chisel, 1" skew chisel.

**24115 8 PC Turning Set**

**24116 8 PC in Wooden Box**

## 5 PC HSS Miniature Turning Set

3 3/4" HSS blades, 6" rosewood handles contains: 1/8" gouge, 1/4" Gouge, 1/16" Parting Tool, 1/4" Skew Chisel and 1/4" Round Nose Scraper. Designed for pen turning & other small projects.

**24125 Miniature Set**



## 6 PC Woodcarving Set

These carving tools are made from high quality hardened and tempered carbon steel and fitted with stained beech handles. The ready honed blades feature 5/16" square chisel, 5/16" bent square chisel, 5/16" skew chisel, 3/16" straight gouge, 5/16" bent gouge and 3/16" bent V tool.

**22000 6 Pc Boxed Woodcarving Tools**



## 3 PC HSS Pen Turning Set

3 1/2" blades HSS, 5 1/2" rosewood handles with brass ferrules. The 1/8" parting tool, 1/2" oval skew chisel & 1/4" bowl gouge. Designed for pen turning and similar projects.

**24160 Pen Turning Set**



## 12 PC Woodcarving Set

Our woodcarving tools are hot forged from the finest carbon steel, hardened & tempered to achieve a Rockwell hardness of 57/60. The blades are traditionally ground, fitted with brass ferruled Rosewood handles & honed ready for use. 12pc set shown is available in fine crafted wood box.

**22410 12pc set in Display box**

**22420 12pc set in Wood box**

## Miniature Woodworking Set



Set includes miniature bevel, saw, square, & mortise gauge in a windowed display box.

**23090 Miniature Woodworking Set**



# Crown Tools from Sheffield, England



## Crown Traditional Cabinet Screwdrivers

### 20300 Set of Six



20303 3 Inches



20304 4 Inches



20305 5 Inches



20306 6 Inches



20308 8 Inches



20310 10 Inches

Crown Mallets are manufactured from the Finest Kiln Dried Beech.



22204 Crown 18 oz Round Mallet



22206 Crown 20 oz 4-1/2" Mallet



## Shavehooks

20178 7" Shavehook Set (Set as shown at left)

20170 9" Triangle

20172 9" Heart

20174 9" Combination

## Carving Tools

These blades, like the 12 piece set pictured on page 28 (parts 22410 and 22420) are traditionally ground and fitted with brass ferruled 5-1/2" Rosewood handles. Overall length of tools is approx 10".



**22210 3/8" Square Chisel**



**22220 1/8" Skew Chisel**



**22230 3/8" Skew Chisel**



**22240 1/4" Straight Gouge**



**22250 1/2" Straight Gouge**



**22260 3/4" Straight Gouge**



**22270 1/8" Straight Gouge**



**22280 1/4" Straight Gouge**



**22290 1/2" Straight Gouge**



**22300 3/8" Straight Gouge**



**22310 1/8" Straight Gouge**



**22320 3/4" Straight Gouge**



**22330 1/16" Veneer**



**22340 3/4" Bent Gouge**



**22350 3/8" Bent Gouge**



**22360 3/8" Spoon Bit Gouge**



**22370 1/8" V Tool**



**22380 1/4" V Tool**



## Brad Pusher



Spring loaded. Overall length is 6 3/4" with rosewood handle.

20108 Brad Pusher

# Crown Tools from Sheffield, England

## Rosewood Bevels



20115 4" Bevel  
20120 9" Bevel  
20125 10" Bevel

## Miniature Marking Knife



This 6" long carbon steel marking knife is beveled on only one side for accurate marking. Rosewood handle is pinned to the blade.

23075 Mini Marking Knife

## Marking Gauges



20162 Beach Marking Gauge



20150 Rosewood Marking Gauge



20153 Rosewood Plated Cutting Gauge

## Cabinet Scrapers

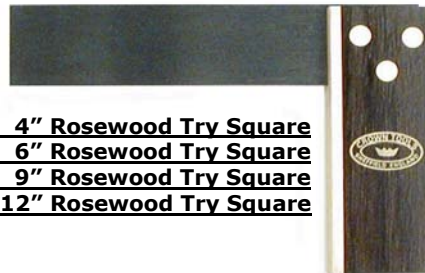


20180 Cabinet Scraper 3x6  
20182 Cabinet Scraper 2½ x 5  
20186 Cabinet Scraper  
gooseneck  
20184 Cabinet Scraper curved  
20188 Cabinet Scraper set of 3  
*Includes 2½ x 5, gooseneck & curved*

## Scraper Handle

*Use Scraper Handle (Part 19990) on page 14 with your Crown Scrapers.*

## Rosewood Try Squares



20130 4" Rosewood Try Square  
20135 6" Rosewood Try Square  
20140 9" Rosewood Try Square  
20145 12" Rosewood Try Square

## Burnisher



Made from high speed steel and fitted with a rosewood handle. The ideal tool for returning the edge to cabinet scrapers.

20260 Burnisher

## Mortise Gauges



20155 Rosewood Mortise Gauge



Brass plated Rosewood head  
20157 Plated Mortise Gauge



Brass plated Rosewood head with Screw slide for making micro adjustments  
20160 Plated Mortise Gauge

## Scratch Awl



20110 Scratch Awl, Rosewood

## Straight Draw Knife



20265 Draw Knife Straight

## Bent Draw Knife



20270 Draw Knife - Bent



# Crown Tools from Sheffield, England



**20200 8" Dovetail Saw**



12 " Tenon Saw - 13 TPI With Brass Back & Beech Handle

**Part 20202 12" Tenon Saw**

## Gents Saws



**20235 4" Mini Gents Saw**

**20240 6" Mini Gents Saw**

**20245 8" Mini Gents Saw**

**20254 10" Gents Saw**



**20250 8" Pax Gents Dovetail Saw**



**20255 10" Pax Gents Reversible Dovetail Saw**



Taper ground, hardened, tempered and sprung teeth are set and factory sharpened. European Beech handle with attractive brass screws.

**22" Panel Saw - 10 TPI**

**24" Rip Saw - 7 TPI**

**Part 20222**

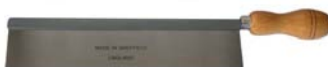
**Part 20224**

## Veneer Saw



**20195 Veneer Saw**

## Dovetail Saws by Thomas Flynn



**20210 10" Dovetail Saw**



**20220 10" Reversible Dovetail Saw**

## Flush Trim Saw



**20190 Flush Trim Saw**

## Crown Mini Series



**23040 Mini Marking Gauge**



**Part 23043 Mini Cutting Gauge**



**23045 Mini Mortise Gauge**

Designed for use by the discriminating woodworker & model maker who requires more manageable tools for those intricate smaller applications. Uses include the making of doll houses & its furniture, model boats & model planes, wooden toys, jewelry boxes, display cases, cabinet making, etc. Despite their size, these tools are made to the same exacting high standards as their full size counterparts.



**23015 Mini Try/Miter Square**



**23030 Mini Dovetail Square 1:8 (Hardwood)**



**23025 Mini Dovetail Square 1:6 (Softwood)**



**23050 Mini Block Plane**



**23055 Mini Bullnose Plane**



**23060 Mini Scraper Plane**

# **BIG HORN CORPORATION**

**929 Poinsettia Avenue, Suite 101-Vista, CA 92081**

**Toll Free: (800) 705-0042**

**Fax Number: (760) 480-0411**

**Sales@bighorncorp.com**

**www.bighorncorp.com**

Distributed by: